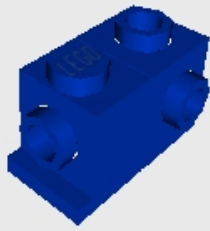


# TRANQUILITY BASE

## INSTRUCTIONS FOR BUILDING A ROBOT DOG

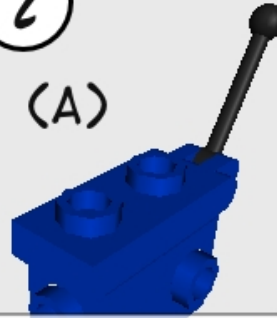
1



2

CHOOSE METHOD (A) OR (B)

(A)



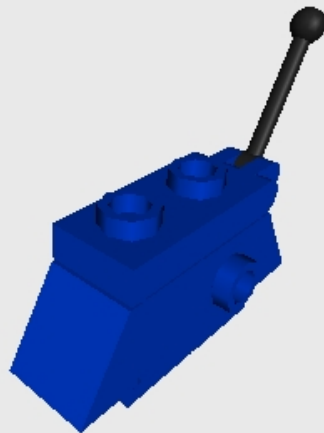
(B)



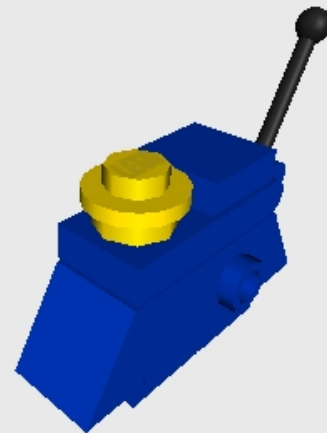
YOU MAY NEED TO USE A TOOL TO GENTLY BEND OUT ONE OF THE HINGE FINGERS, PUSH THE CONTROL STICK IN, AND THEN GENTLY PUSH THE FINGERS CLOSED AGAIN

CUT APPROX. 3 MILLIMETRES OF TECHNIC PNEUMATIC TUBING AND PUSH OVER THE BASE OF THE CONTROL STICK SO THAT IT STAYS BETWEEN THE CLICK HINGE FINGERS

3



4



5



6



7



### PARTS LIST

